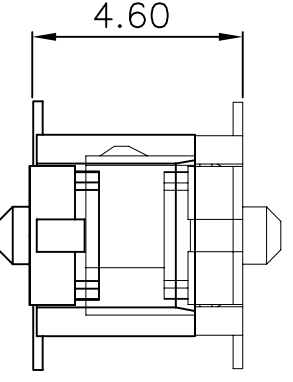
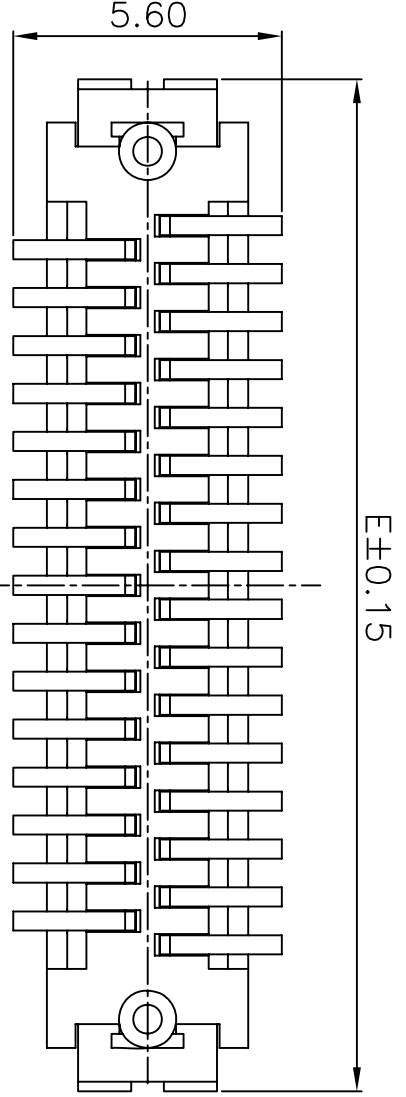
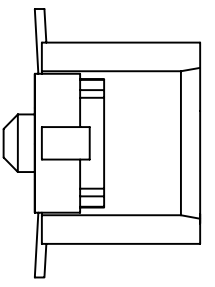
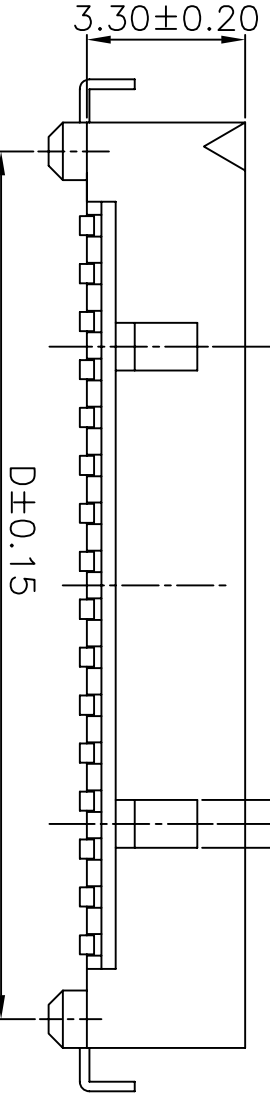


P.C.B Layout



ASSEMBLY

SPECIFICATIONS

Voltage rating: 50V AC, DC  
 Current rating: 1.0A AC/DC  
 Withstanding Voltage: 250V AC/minute  
 Insulation resistance: 100MΩ min  
 Temperature range: -25°C - +85°C  
 Contact resistance: 50mΩ

HOUSING

Part No: SCT1008WVM-S-XXP  
 Material: LCP, UL94V-0

PART NO.	Dimensions				
	A	B	C	D	E
SCT1008WVM-S-31	19.3	14	15	18.1	21.1
SCT1008WVM-S-41	24.3	19	20	23.1	26.1
SCT1008WVM-S-51	29.3	24	25	28.1	31.1

OPERATION	~ 10	±0.15	DRAW	Judy.Huang	2006/05/02	SCALE	mm	 森康达电子有限公司 SCONDAR ELECTRONIC LIMITED
DESIGN	20 ~ 30	±0.30	CHECK	Micky.Liu	2006/05/02	A4	PART NO.	
ANGLE	30 ~	±0.50	APPROVE	Hellen.Li	2006/05/02	1/1	TITLE:	SCT1008WVM-S-XXP
DIM	± 2'		PROJ.				DRAWING NO.	HRS DF9 1.0 180C SMT MALE WAFER

REV	DATE	MODIFICATION DESCRIPTION	CHANGE	APPROVE
0	05/12/27	NEW		